

Send both sides of this form to:

Attn: Membership  
138 West Bishop Street  
Bellefonte PA 16823  
Email: Phorner@PRWA.com  
or Fax: (814) 353-9341

**TELL US A LITTLE MORE  
ABOUT YOURSELF:**

*Is this membership for you (individual)  
or a company?*

☐ Individual ☐ Company

**Active or Retired?**

☐ Active ☐ Retired

*What do you hope to gain with this membership?*

---

---

---

---

## Our Mission

*The mission of the Pennsylvania Rural Water Association is to work cooperatively within the industry to support not only its members but all the water and wastewater utilities throughout the Commonwealth with professional technical support, certified training, legislative representation, and other valuable services and benefits.*

### THE PRWA PROMISE

If you're not 100% satisfied with your first year of membership, we'll refund every penny of your 1st years dues!

[www.prwa.com/promise](http://www.prwa.com/promise)

# Subscription Membership

*Stay up to date with everything going on in the industry.*



**pa rural water**  
Association

**Pennsylvania Rural Water Association**

138 West Bishop Street  
Bellefonte, PA 16823

**(800) 653-7792**

**WWW.PRWA.COM**

Serving the water & wastewater industry  
since 1988

**pa rural water**  
Association

**Subscription Membership is great for individuals and companies that want to stay up-to-date on what is going on the industry today.**

**Subscription Members** are individuals that are entitled to join the PRWA information & publication list for:

- ◆ **The Keystone Tap** - our award-winning quarterly magazine with great informational & technical articles about the issues that are facing systems across the state.
- ◆ **Certification Exam Notification** - Learn about the tests being held by PRWA throughout the year.
- ◆ **Legislative Updates** - PRWA gives systems a voice in Washington D.C. and Harrisburg when the tough issues arise.
- ◆ **Regulation Updates** - Help your system stay in compliance and avoid fines by giving you a clear understanding of the latest regulation changes.

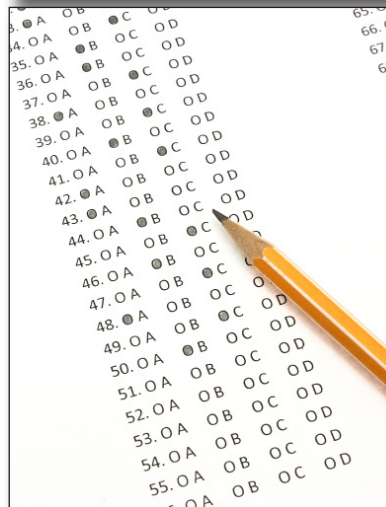
**Go to [www.prwa.com/membership](http://www.prwa.com/membership) to learn more about PRWA and the benefits of joining.**

**Have more questions on this membership?**

**Contact Pattie-Jo Horner**

**Call: (484)561-5400 | Email: [phorner@prwa.com](mailto:phorner@prwa.com)**

***Please note that Subscription Members are ineligible for discounts on training classes and event registration.***



## **2026 PRWA Subscription Membership Application**

also available at [www.prwa.com/membership](http://www.prwa.com/membership)

System/Company Name

Mailing Address

City

State

Zip Code

Contact Person

County

Phone

Fax

E-mail

Website

*To better serve you, please fill out the back part of this form*

**Subscription Membership  
for one year: \$74**

**TOTAL AMOUNT DUE: \$ \_\_\_\_\_**

### **METHOD OF PAYMENT:**

☐ **Check** (Payable to PRWA)

☐ **Invoice Me**

*For security reasons, all credit card transactions must be processed through our website. If you prefer to pay via credit card, please visit [www.prwa.com](http://www.prwa.com).*

This form can be returned to PRWA via mail, fax, or email\*\*.

*Contact information is on the back.*

**\*\*Email is inherently insecure. Credit card information should not be emailed or sent in an attachment.**